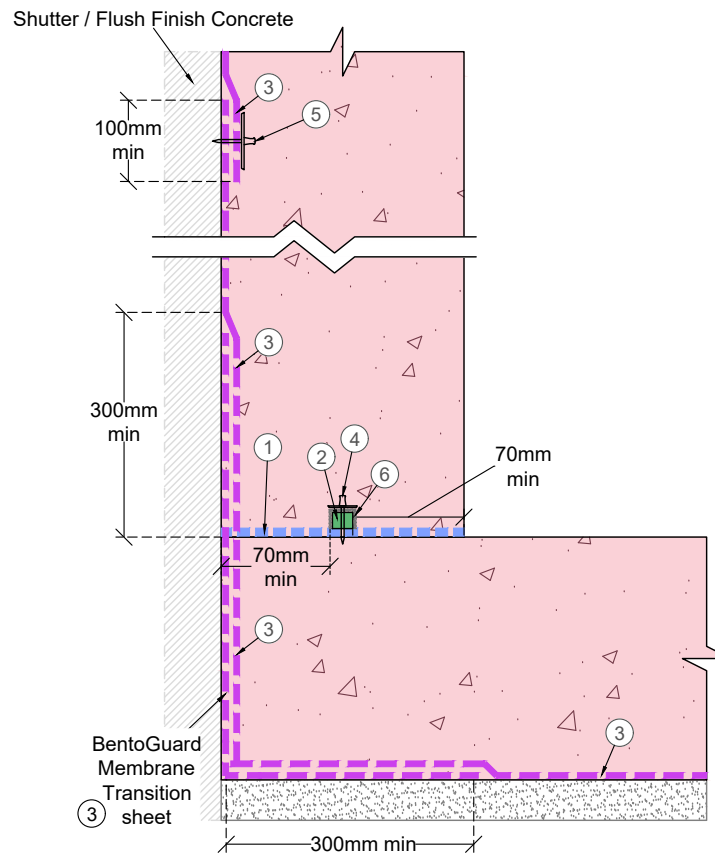
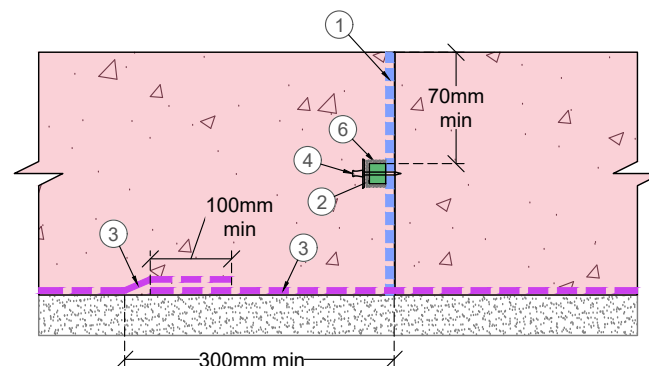


Kicker



Kickerless



Day Joint

Notes:

- All Hydroswell BentoStrip must overlap by 100mm where ever there are intersections.
- Slurry to be applied a minimum of 70 mm either side of the Hydroswell BentoStrip.
- Please refer to all relevant method statements for preparation and application information.
- All construction joints must have Hydroswell BentoSteel installed over the top of Hydroswell BentoStrip.

Legend:

- ① — Xypex Concentrate Slurry
- ② — Hydroswell BentoStrip
- ③ — BentoGuard Membrane
- ④ — Hydroswell BF 36/52
- ⑤ — Hydroswell MF 66/32
- ⑥ — Hydroswell BentoSteel
- Concrete containing Xypex Admix

03	Drawing template updated	NG	09/02/24	DW	07/03/24
02	BentoSteel note added	NG	04/10/22	AL	04/10/22
01	Changes to title block	NG	23/09/22	AL	27/09/22
Rev	Description	Drawn by	Date	Checked	Date

All dimensions are in millimetres, unless stated. All dimensions to be checked on site prior to commencement of any work. Copyright protected - no part of this drawing may be reproduced without prior consent of SMR Projects Ltd.



waterproofing specialists

www.smrxyper.co.uk  
e.info@smrxyper.co.uk  
t.01295 279747

Hydroswell XYPEX

SMR House, Beaumont Close, Banbury, Oxfordshire, OX161TG

Project Name:  
**Typical Xypex - BentoGuard Detail**

Drawing Title:  
**Typical Xypex-BentoGuard Standard Detail**

Project Number: - Date: 11/03/22

Drawing Number: XH101 Rev: 03

Drawn: NG Checked: AL Approved: AL Scale: NTS ISO A4 297 x 210mm