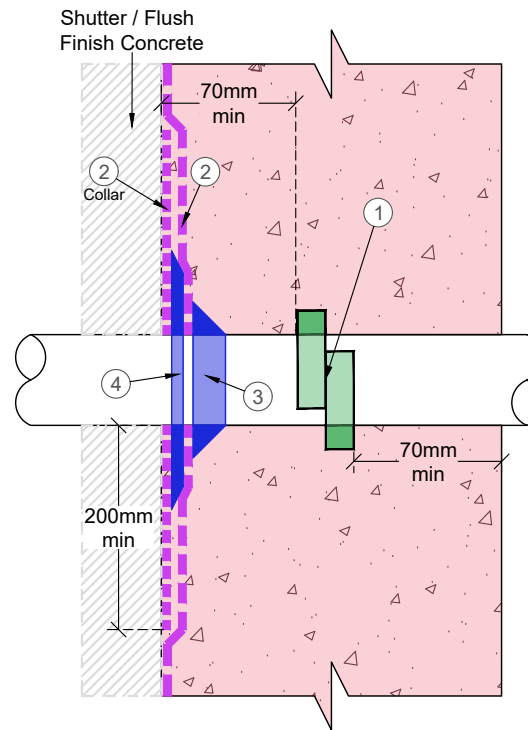
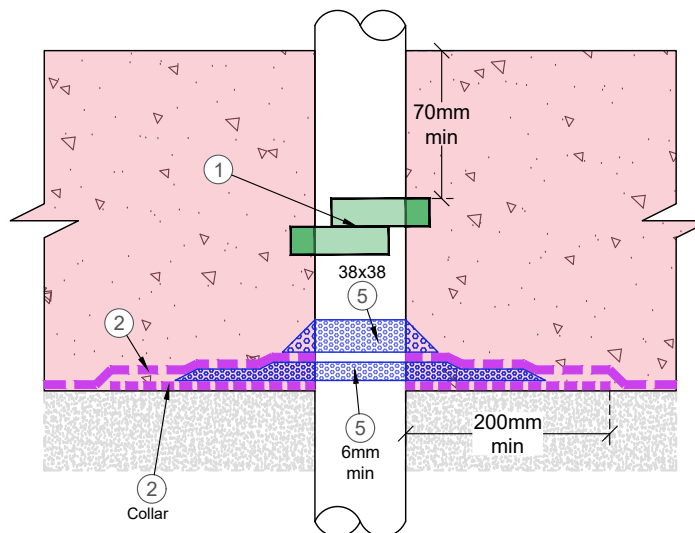


(Horizontal Penetration - Post Applied BentoGuard Membrane & BentoGuard Putty)



(Horizontal Penetration - Pre Applied BentoGuard Membrane & BentoGuard Putty)



(Vertical Penetration - Pre Applied BentoGuard Membrane, BentoGuard Granules & Putty)

Notes:

- All Hydroswell BentoStrip must overlap by 100mm where ever there are intersections.
- Please refer to all relevant method statements for preparation and application information.

Legend:

- ① Hydroswell BentoStrip
- ② BentoGuard Membrane
- ③ BentoGuard Putty 38mmx 38mm
- ④ BentoGuard Putty
- ⑤ BentoGuard Grain
- Concrete containing Xypex Admix

02	Drawing template updated	NG	09/02/24	DW	07/03/24
01	Changes to legend, title block & drawing	NG	23/09/22	AL	27/09/22
Rev	Description	Drawn by	Date	Checked	Date

All dimensions are in millimetres, unless stated. All dimensions to be checked on site prior to commencement of any work. Copyright protected - no part of this drawing maybe reproduced without prior consent of SMR Projects Ltd.



www.smrrypex.co.uk
e.info@smrypex.co.uk
t.01295 279747

waterproofing specialists | Hydroswell XYPEx

SMR House, Beaumont Close, Banbury, Oxfordshire, OX161TG

Project Name:
Typical Xypex - BentoGuard Detail

Drawing Title:
Typical Xypex - BentoGuard Penetration Cast in

Project Number: - Date: 11/03/22

Drawing Number: XH104 Rev: 02

Drawn: NG Checked: AL Approved: AL Scale: NTS ISO A4 297 x 210mm