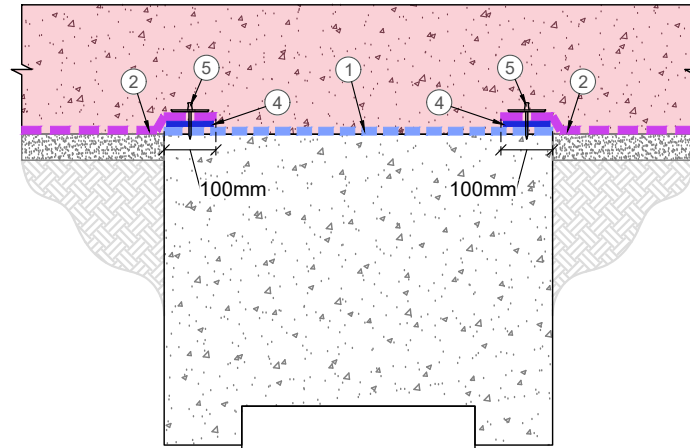
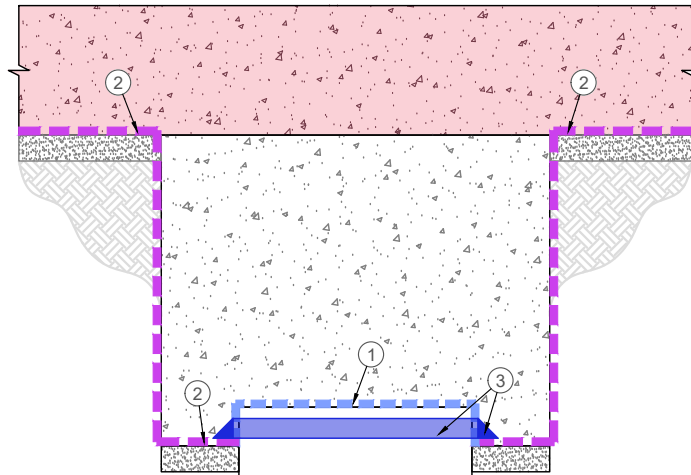


Option 1



Option 2



Option 3

**Notes:**

- Please refer to all relevant method statements for preparation and application information.

**Legend:**

- ① Xypex Concentrate Slurry
- ② BentoGuard Membrane
- ③ BentoGuard Grain or Putty 38mmx 38mm
- ④ BentoGuard Putty
- ⑤ Hydroswell MF 66/32
- Concrete containing Xypex Admix

| 02  | Drawing template updated         | NG       | 09/02/24 | DW      | 07/03/24 |
|-----|----------------------------------|----------|----------|---------|----------|
| 01  | Change to title block and legend | NG       | 23/09/22 | AL      | 27/09/22 |
| Rev | Description                      | Drawn by | Date     | Checked | Date     |

All dimensions are in millimetres, unless stated. All dimensions to be checked on site prior to commencement of any work. Copyright protected - no part of this drawing maybe reproduced without prior consent of SMR Projects Ltd.



w. [www.smrrypex.co.uk](http://www.smrrypex.co.uk)  
 e. [info@smrrypex.co.uk](mailto:info@smrrypex.co.uk)  
 t. 01295 279747

**Hydroswell XYPEX**

SMR House, Beaumont Close, Banbury, Oxfordshire, OX161TG

Project Name:  
**Typical Xypex - BentoGuard Detail**

Drawing Title:  
**Foundation Slab on Pile Cap - Options**

Project Number: - Date: 11/03/22

Drawing Number: XH115 Rev: 02

|           |             |              |            |                       |
|-----------|-------------|--------------|------------|-----------------------|
| Drawn: NG | Checked: AL | Approved: AL | Scale: NTS | ISO A4<br>297 x 210mm |
|-----------|-------------|--------------|------------|-----------------------|