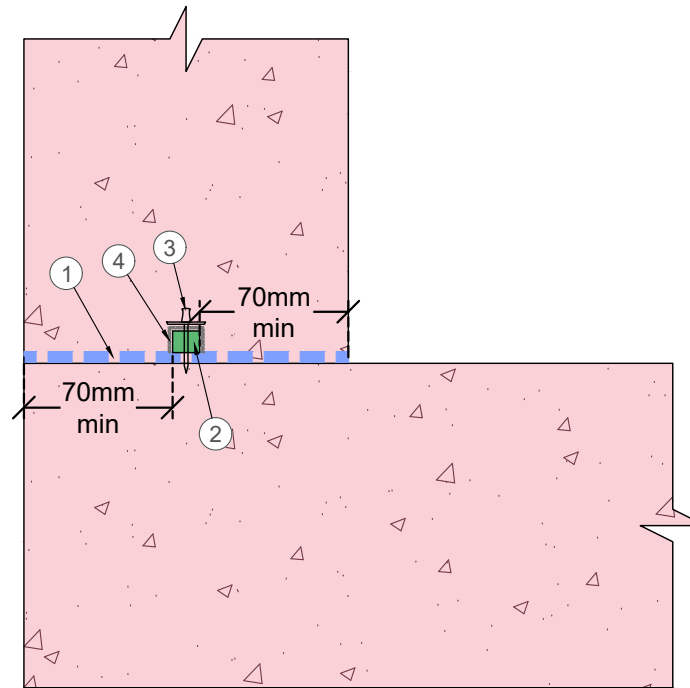
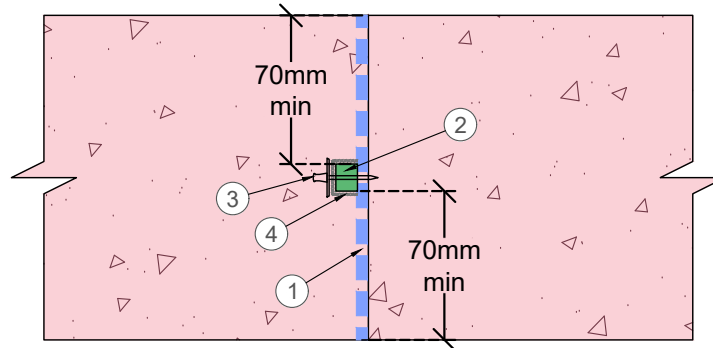


Kicker



Kickerless



Day Joint

Notes:

- Please refer to all relevant method statements for preparation and application information.
- All Hydroswell BentoStrip must overlap 100mm, side by side where ever there are intersections.
- Slurry to be applied a minimum of 70 mm either side of the Hydroswell BentoStrip.
- All construction joints must have Hydroswell BentoSteel installed over the top of Hydroswell BentoStrip.

Legend:

- ① --- Xypex Concentrate Slurry
- ② ■ Hydroswell BentoStrip
- ③ ⊥ Hydroswell BF 36/52
- ④ - - - Hydroswell BentoSteel
- Concrete containing Xypex Admix

02	Drawing template updated	NG	19/01/24	DW	07/03/24
01	BentoSteel note added	NG	03/10/22	AL	03/10/22

Rev Description Drawn by Date Checked Date
 All dimensions are in millimetres, unless stated. All dimensions to be checked on site prior to commencement of any work. Copyright protected - no part of this drawing maybe reproduced without prior consent of SMR Projects Ltd.



www.smrxypex.co.uk
 e.info@smrxypex.co.uk
 t.01295 279747
 SMR House, Beaumont Close, Banbury, Oxfordshire, OX161TG

Project Name: Xypex Standard Detail				
Drawing Title: Standard Construction / Day Joint				
Project Number: -	Date: 26/09/22			
Drawing Number: XSD001	Rev: 02			
Drawn: NG	Checked: AL	Approved: AL	Scale: NTS	ISO A4 297 x 210mm