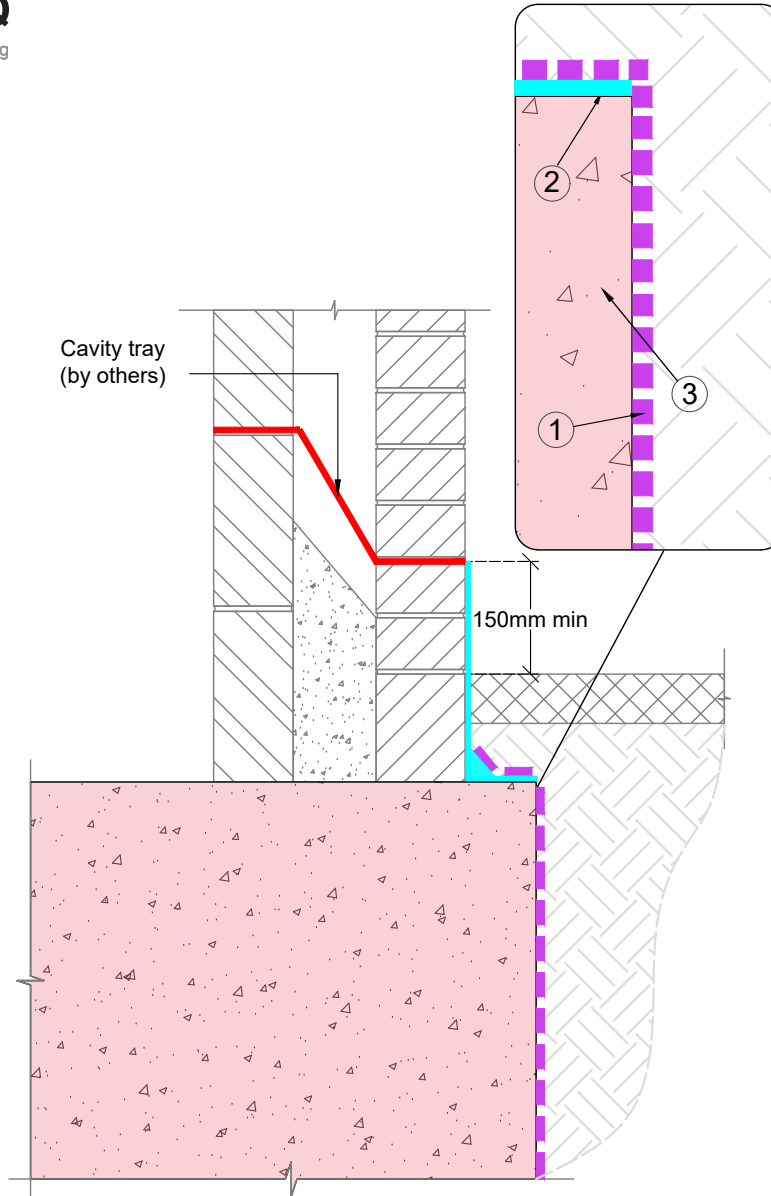




MANORTEQ

Completing the Waterproofing



Notes:

- Please refer to all relevant method statements for preparation and application information.

Legend:

- ① BentoGuard Membrane
- ② Manorteq
- ③ Concrete containing Xypex Admix

| 01 | Lap details and annotation revised | | | | |
|-----|------------------------------------|----------|------|---------|------|
| Rev | Description | Drawn by | Date | Checked | Date |

All dimensions are in millimetres, unless stated. All dimensions to be checked on site prior to commencement of any work. Copyright protected - no part of this drawing may be reproduced without prior consent of SMR Projects Ltd.



w. www.smrrypex.co.uk
 e. info@smrrypex.co.uk
 t. 01295 279747

Hydroswell XYPEx

SMR House, Beaumont Close, Banbury, Oxfordshire, OX161TG

Project Name:
Typical Xypex - BentoGuard Detail

Drawing Title:
Waterproofing to DPC

Project Number: - Date: 17/06/26

Drawing Number: XH119 Rev: 01

| | | | | |
|---------------------|-----------------------|------------------------|----------------------|------------------------------|
| Drawn: BH | Checked: DA | Approved: GH | Scale: NTS | ISO A4 297 x 210mm |
|---------------------|-----------------------|------------------------|----------------------|------------------------------|