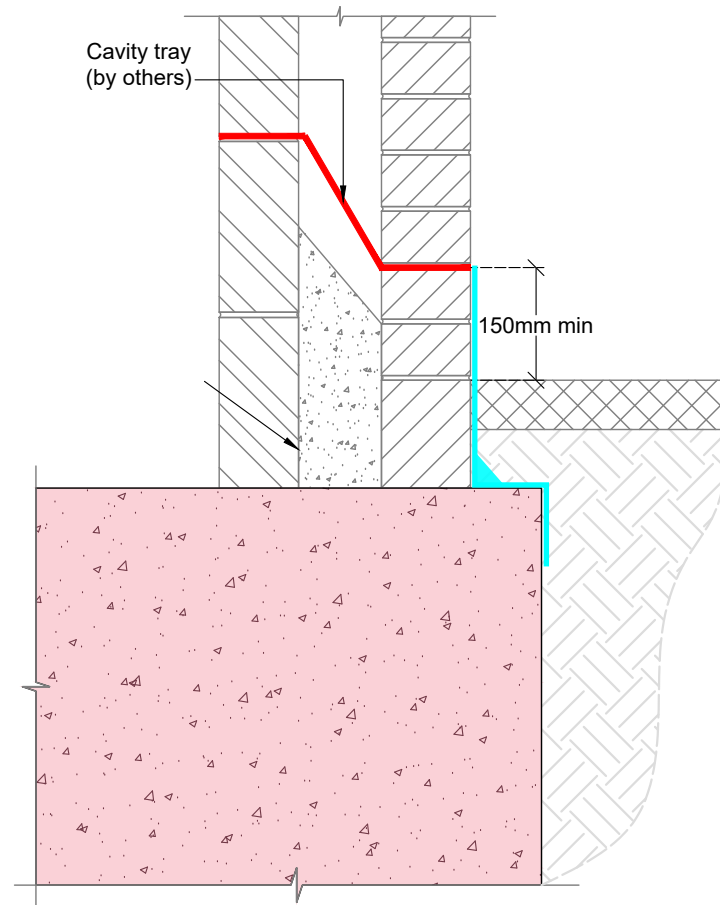




**MANORTEQ**

Completing the Waterproofing



**Notes:**

- Please refer to all relevant method statements for preparation and application information.

**Legend:**

- ①  Manorteq
- ②  Concrete containing Xypex Admix

01	Lap details and annotation revised				
Rev	Description	Drawn by	Date	Checked	Date

All dimensions are in millimetres, unless stated. All dimensions to be checked on site prior to commencement of any work. Copyright protected - no part of this drawing maybe reproduced without prior consent of SMR Projects Ltd.

w. [www.smrrypex.co.uk](http://www.smrrypex.co.uk)  
e. [info@smrrypex.co.uk](mailto:info@smrrypex.co.uk)  
t. 01295 279747

**Hydroswell XYPEX**

SMR House, Beaumont Close, Banbury, Oxfordshire, OX161TG

Project Name:  
**Typical Xypex - Manorteq Detail**

Drawing Title:  
**Waterproofing to DPC**

Project Number: - Date: 17/06/26

Drawing Number: XSD049 Rev: 01

Drawn: <b>BH</b>	Checked: <b>DA</b>	Approved: <b>GH</b>	Scale: <b>NTS</b>	<b>ISO A4</b> 297 x 210mm
---------------------	-----------------------	------------------------	----------------------	------------------------------